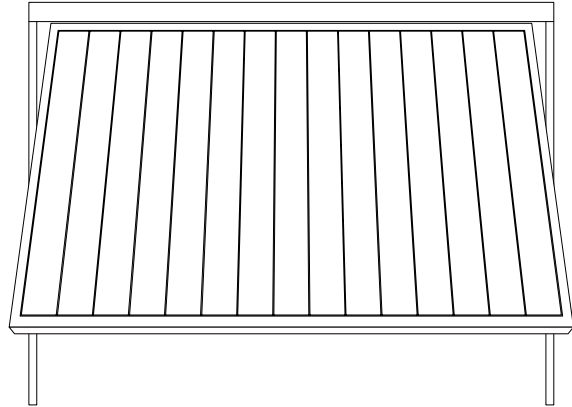
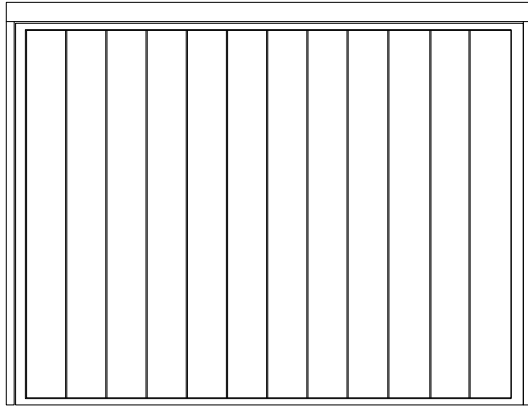


## specification for up-and-over garage doors

Delivery to mainland UK only

Available in all standard e80 front door designs (excluding those with glass or raised panels)



### Frame sizes

	Width mm	Height mm
frame size up to	5500	2400

### Entry opening options

Manual\*\*



Automatic



\*\*Manual opening is ONLY available on our side-hinged garage doors

### Door structure

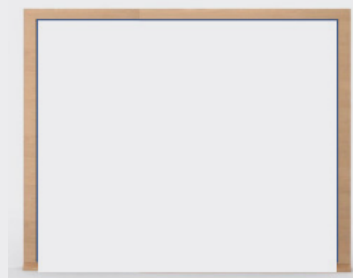
- |   |  |      |
|---|--|------|
| 1 | Up and over opening & locking system     | ✓    |
| 2 | Exterior solid wood lamination layer     | 5mm  |
| 3 | (Exterior side) internal composite layer | 12mm |

### Door finish options\*

	Sealing / protective	Unfinished
Hardwood	Oil Lacquer	N/A
Metallic	Beeswax Lacquer	Oxidises Weathers naturally

### Frame structure

- |   |                                 |     |
|---|---------------------------------|-----|
| 1 | Steel frame                     | ✓   |
| 2 | Steel frame solid wood cladding | 5mm |



### Security & Hardware

- |   |                          |   |
|---|--------------------------|---|
| 1   | 2 channel remote control | 2 |
| - BDS120 transmitter with bidirectional encryption (Bisure) |                          |   |



### (OPTIONAL EXTRA)

Internal push button with illuminated impulse button 7m connecting cable, 2-core

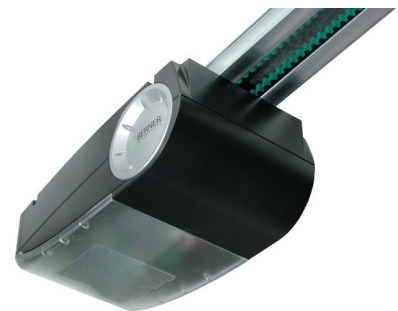
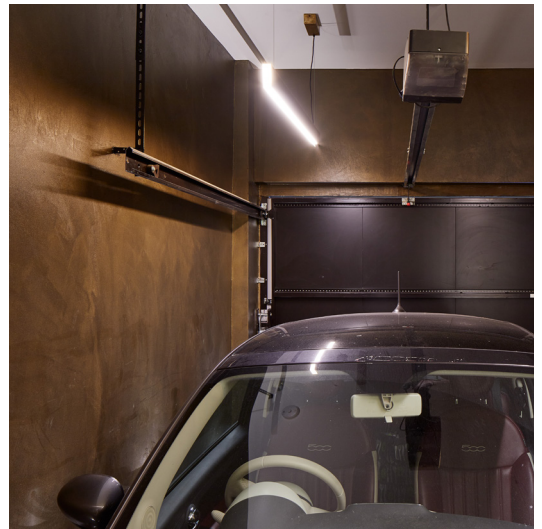


\*Maintenance frequency varies depending on finish and exposure (page 3). RAL painted doors do not require an additional protective finish

## Up and over system: Berner operator

The Berner garage door opener combines all innovative functions and advantages in one opener for the first time.

- 1 Timer lighting
- 2 Energy-saving stand-by function
- 3 Faster opening speed of up to 220mm/sec, 1000 N of power
- 4 Highest-possible break-in protection and user safety
- 5 Manual override option available in case of power cut




# about exposure and choosing the right garage door

The beauty of real natural hardwood is in both its aesthetics & properties, in the long-run it will outperform any man-made equivalent. We offer a wide range of choices to allow you to create the perfect garage door bespoke to your needs.

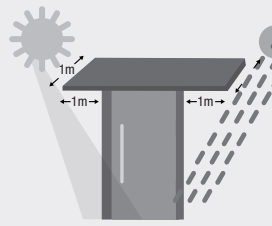
**We recommend all our doors are fully protected by a substantial porch or canopy & planning this protection early will give you more choice and flexibility and lower maintenance frequency.**

See the table below which shows the approximate maintenance frequency depending on the final finish and location exposure (oil & lacquer relate to natural hardwood garage doors).

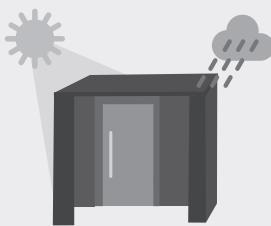
**High exposure**  
(fully open to the elements and/or coastal locations)



**Semi-exposed**  
(protected by canopy/porch min. size half the door height on all sides)



**Protected**  
(fully setback or protected all sides by a porch/canopy)



Door finish (average maintenance frequency shown in table)	Oiled	1m-1 year	6m-1 year	Once a year
	Lacquered	1-5 years	2-5 years	3-10 years
	RAL colours	1-5 years	2-8 years	5-10 years

\*Bronze doors are finished with beeswax, lacquer or left unfinished. Maintenance required as needed – contact us for more details.



Please note: urban front doors are supply only

Guarantees: 2 year manufacturing warranty on door & motor