

## e80pivot range



**specifications for urban front e80pivot doors**  
**optional extras**  
**natural hardwood characteristics**

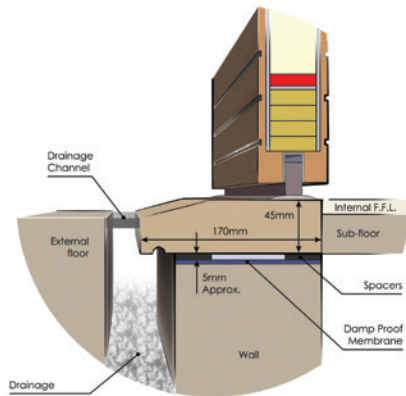
# specifications for urban front e80pivot doors

## Overall frame Sizes (Single Doorsets)

- Standard overall frame size 1200x2400mm
- Maximum overall frame size bespoke 1500x3000mm

## Structure (Door)

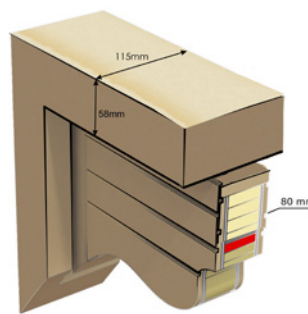
- Exterior cover layer 6mm of natural solid wood lamination
- 10mm of composite stabilizing layer
- Double steel reinforcement 6/40 thick X 2
- Paraffin Insulation 290 Kg/m<sup>3</sup>
- calculated door leaf insulation of 1.112W/m<sup>2</sup>K and 32db sound insulation
- 10mm of composite stabilizing layer
- Interior cover layer 6mm of natural solid wood lamination
- Inwards opening as standard – Outward opening on request
- Overall door cover thickness 80mm



e80 pivot cill section

## Structure (Frame)

- Laminated solid wood rebated frames 58 x 115mm
- Drop seals to the top and bottom
- Acoustic weatherseals withstand temperature +70c to -30c
- Matching natural solid wood Cill with slimline threshold compliant with part M building regulation
- Fingersafe frame to reduce the risk of finger trap



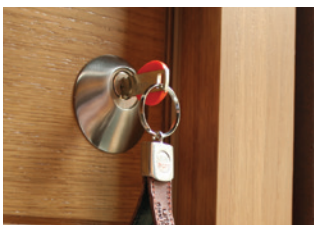
e80 frame section



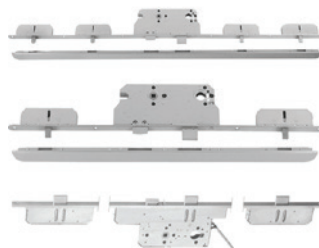
e80 fingersafe frame rebate

## Security and Hardware

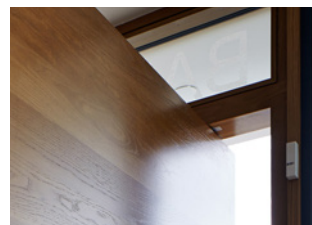
- High security cylinder with 3 security keys
- Class 4 security multipoint lock, tested to ENV 1627-1630 resistance Class 4 – fire tested to EI30
- Free swing pivot system, pivot position around 200mm from the edge of the door max. weight 400kgs
- Security Glazing 26mm double glazed with Laminated and toughened planitex glass – argon filled – 1.1 UValue on glass pane (if applicable)



security escutcheon



class 4 multipoint locks



Pivot 200mm from door edge



high security key x 3



high security cylinder

# optional extras

---

## Sprung pivot door closer

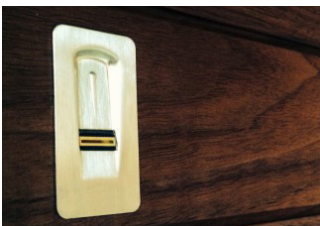
Sprung pivot is occasionally required on doors where soft closing option is desired. It is **highly recommended on large doors** especially with side glass units to reduce the vibration when doors are closing. Only suitable for pivot doors. Can be set to open at 90°.



sprung pivot door closer

## Integrated fingerprint system

This system is used together with our Motorised Multipoint Lock. It can be used together with or without a third party entry system. This option will eliminate the need of using keys to open the door, easy to programme and up to 99 person can be programmed in. Also comes with Bluetooth for mobile phones operation. Fitted only (a professional electrician is required onsite for final wiring)



integrated fingerprint system (optional)

## Flush frames & Flush doors

See important info under finishing



flush door (optional)

## Motorised multipoint lock

High security lock designed to automatically engage the security bolts when the door is shut, no keys are required to lock the door. It can be used in combination with our Integrated fingerprint entry system or with most third party entry systems that are available on the market. Ideal where high security is required without daily use of keys

(The lock is designed to stay locked in case of power cut, and keys are supplied with each door as standard as a manual over ride option). Fitted only (a professional electrician is required onsite for final wiring)



security motorised multipoint lock (optional)

## Electric latch

This option is ideal for commercial premises but can also be used for residential if a high level of security is not essential. The door will be locked on the latch only during normal operation, manual locking of the deadbolts is required to fully secure the door. (a professional electrician is required onsite for final wiring)



electric latch (optional)

## Door viewer



door viewer (optional)

## Extra security keys



extra security keys (optional)