

specifications for side hung garage doors



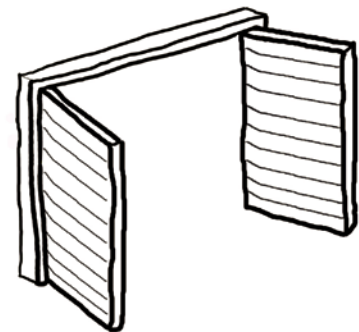
triple up-and-over rondo automated garage doors / iroko / stainless steel inserts

Overall Frame Sizes

- Maximum structural opening – 2800mm wide x 3000mm high

Characteristics

- Two door wings, outward or inward opening
- Available in all of our standard E80 Range door designs and all woods
- e80 style, steel reinforced, insulated and fully weather sealed
- Available manual or automated
- Steel reinforced for extra stability and high security
- 80mm thick with overall frame size
- 3D concealed hinges†
- 39mm ventilated paraffin insulation especially designed to prevent moisture build up and eliminate warping
- Door leaf producing an insulation value of 1.1w/m2k
- Hardwood laminated frame sections 115 x 70mm
- Grade 4 Multipoint security locks, security keys, high grade stainless steel fittings
- Available in all woods and designs



Optional extras

- Full automation
- Fingerprint entry system
- Automatic door closers

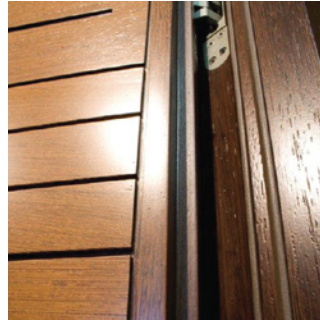
Finishing

- Supplied with either clear UV protection lacquer or clear UV protection oil. Maintenance required with frequency depending on exposure

Guarantees*

- 5 Year manufacturing warranty on Doorset

**Please refer to our terms & conditions*



e80 double rebated frame



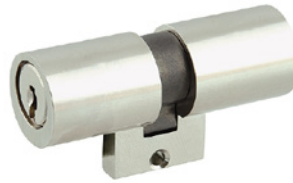
3D concealed hinge



escutcheon



multipoint locks



security cylinder



key