

## specifications for up-and-over garage doors



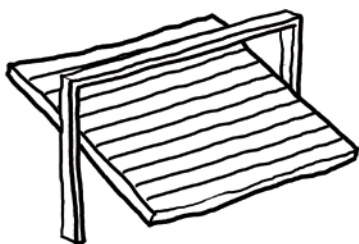
triple up-and-over rondo automated garage doors / iroko / stainless steel inserts

### Overall Frame Sizes

- Maximum structural opening – 6000mm wide x 2400mm high

### Characteristics

- Available in limited designs
- Automated
- Choice of all our natural hardwood or painted options
- Two remote operators per door with multiple functions
- Motor with integrated locking system resisting up to 300Kgs of force
- Two multi led light beams



## optional extras

### senso

- For recording temperature and air humidity in the garage. The carriage automatically opens the door a bit if necessary, ensuring perfect circulation. When the optimal value has been achieved, the door is closed, reducing the risk of mould formation.

### intelligent control technology

- This module offers a wide variety of setting options on your smartphone or tablet by means of the Web app.

### remote control

- Four-command transmitter
- Noticeable quality of radio control system thanks to vibration for confirmation of reception

### infra red indicator

- Infra red indicator for correct parking position

### finishing

- Supplied with either clear UV protection lacquer or clear UV protection oil. Maintenance frequency depending on exposure

### guarantees\*

- 1 Year manufacturing warranty on Door and Motor

### manual over ride

This option is required on garage doors that don't have a secondary access like a separate pedestrian door. It allows the operator to disengage the lock on the motor from the outside in case of malfunction or power cut.

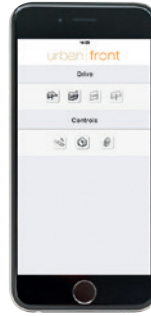
*\*Please refer to our terms & conditions*



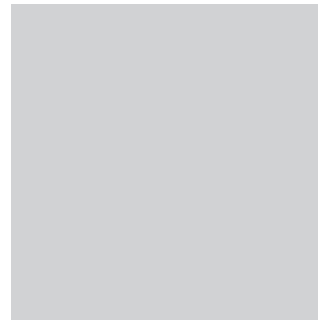
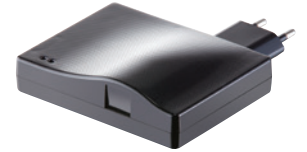
powerful silent motor (optional)



remote control (optional)



intelligent control technology (optional)



manual override (optional)