

## specification for e90steel hinged front doors

### Frame sizes (single doorset)

	Width mm	Height mm
Standard frame size up to	1400	2500

### Door values

Total door thickness	90mm
Total door weight	70kg/m²
Thermal insulation and energy saving U-Value	Up to 0.7W/m²K
Sound insulation tested	To 40dB
Triple high security glass	0.7W/m²K

### Advanced testing standards

	EN14351-1
Security against Forced Entry tested to class RC3	EN1627
Operating forces tested to Class 3	EN12046-02
Air permeability tested to Class 4	EN1026
Water tightness tested to Class 7A	EN12208
Resistance to wind load tested at C5	EN12210
Conformity with European health, safety & environmental requirements	CE Marking

### Door structure

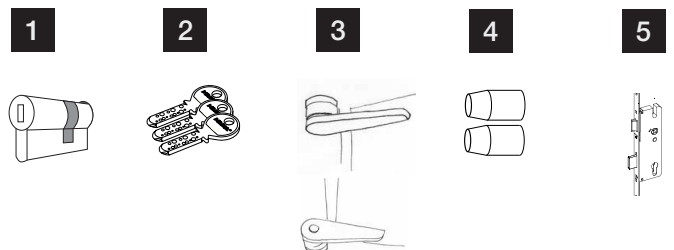
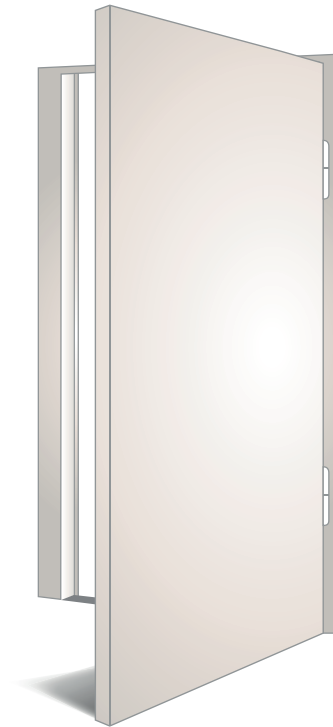
- Sheet steel construction
- Inner in-fill insulation
- Door leaf (door face) weighted with inner steel cups
- Flush finish (door leaf sits in-line with the front of the frame)

### Frame structure

- Slim door frame profile manufactured from zinc steel
- Frame insulation via thermal breaks/PU hard foam
- Weatherseals (1 outer, 1 inner)

### Security & hardware

<b>1</b> (Flush) high security cylinder	✓
<b>2</b> Security keys	3
<b>3</b> Partially concealed hinges (internal side)	2 per door
<b>4</b> Stainless steel safety bolts (internal side)	2
<b>5</b> Security 3 point lock with round/hook bolt locking system	✓



# high security locking & door closing options

All our locking options are highly secure. Learn the differences in practical use below.

## **INCLUDED**

### **Multi-point lock + thumbturn**

Our 3-point lock requires locking with the key when you leave the house.

**From the inside:** as a minimum the door is always locked on the latch when it is shut, turn the thumbturn to fully secure the door and double lock it (and unlock the door again)

**From the outside:** when the door is shut, use the key to lock the door (and unlock the door again).

## **(OPTIONAL EXTRA)**

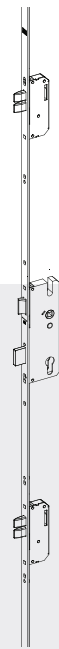
### **Self-locking multi-point lock + thumbturn (mechanical, no wiring required)**

For added peace of mind, the 3-point self-locking option means you don't have to worry about locking your door with the key when you leave the house.

**From the inside & outside:** when the door is shut, the multi-point lock is automatically engaged and locks the door.

You do not need to use the key from the outside to lock the door.

You do need the key to unlock from the outside.



PLEASE NOTE: ALL OPTIONS BELOW ARE SUPPLIED FITTED ONLY. A PROFESSIONAL ELECTRICIAN IS REQUIRED ONSITE FOR FINAL WIRING.

## **(OPTIONAL EXTRA)**

### **Motorised self-locking & fingerprint entry (or other automatic/electrical entry system) + thumbturn**

Choose this option where self-locking and no keys are preferred. This locking system acts the same as self-locking but allows integration with additional electrical/keyless opening systems.

#### **Motorised self-locking:**

**From the inside & outside:** when the door is shut, the lock is automatically engaged and locks the door.

The lock is designed to stay locked in case of a power cut.

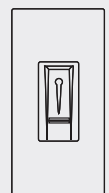
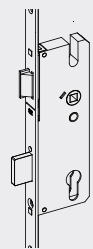
You will still receive keys in case a manual override is required.

#### **Fingerprint entry system:**

Register up to 99 fingerprint sets to unlock the door from the outside without a key. This can be integrated with motorised locking.

#### **Other 3rd party entry systems (not supplied):**

These can be used in conjunction with fingerprint entry or on their own. They will also require the motorised locking option.



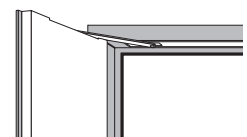
## **(OPTIONAL EXTRA)**

### **Door closing: concealed hinged soft-closing system**

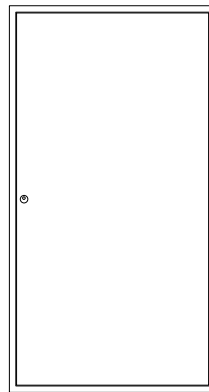
Highly recommended where hinged doors are being fitted into glass (curtain walling).

This option prevents the door from slamming shut (reducing possible and repeated impact on the glass) and allows the door to close gently on its own.

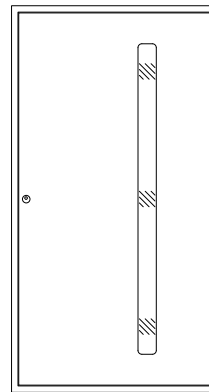
The concealed hinged door closer will not let the door stay open. A door stop or wedge would be needed if required.



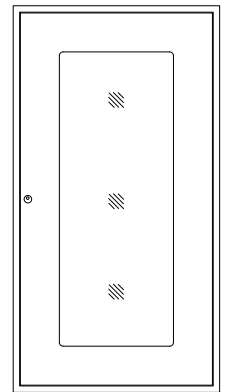
## 3 designs



Raw

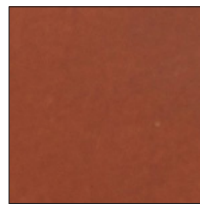


Terano

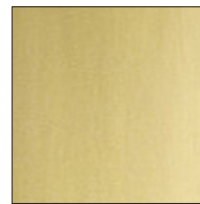


Ice

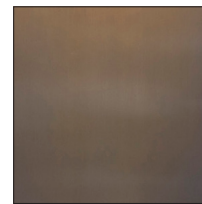
## 4 luxury finishes



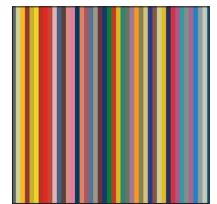
Corten (weathered steel)



Polished Brass



Bronze



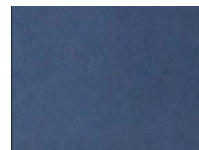
Any RAL colour

## Internal customisation

Internally, we offer additional customisation if you prefer to differentiate your exterior and interior view/styling.



40+ leather colour options



Black steel (interior only)

## 3 handle options



L-shaped handle



Pull handle



Concealed handle

# steel & its natural characteristics

---

**Steel is an alloy combining different natural metals. Like all natural materials, this product may show visual evolutions over time when exposed to the outdoors and in particular the natural effect of oxidisation.**

All steel finishes, including weathered steel, are subject to some small scratching and colour evolution over time. These changes add to the individuality, exclusivity and beauty of every door and are desired in houses/projects that wish to convey a premium statement.

Weathered steel - has undergone a manual process that replicates natural oxidisation and prevents it from oxidising further. It creates a weather resistant air and watertight external layer that delivers the sought after industrial/rust aesthetic in a controlled manner.



*Corten steel door with matching weathered steel cladding*